

## 1. PERFORMANCE

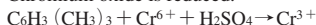
- 1) Measuring range : 20-250 ppm  
Number of pump strokes : 1 (100mℓ)
- 2) Sampling time : 1.5 minutes/1 pump stroke
- 3) Detectable limit : 1 ppm
- 4) Shelf life : 2 years
- 5) Operating temperature : 0 ~ 40 °C
- 6) Reading : Graduations printed on the tube are calibrated by Ethyl acetate at 1 pump stroke and 1,2,4-trimethyl benzene is determined by using a conversion chart.
- 7) Colour change : Yellow → Dark brown

## 2. RELATIVE STANDARD DEVIATION

RSD-low : 10 % RSD-mid. : 5 % RSD-high : 5 %

## 3. CHEMICAL REACTION

Chromium oxide is reduced.

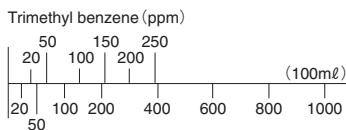


## 4. CALIBRATION OF THE TUBE

GAS CHROMATOGRAPHY

## 5. INTERFERENCE AND CROSS SENSITIVITY

Substance	Interference	Coexistence
Alcohols	Brown stain is produced.	Higher readings are given.
Esters	∕	∕
Ketones	∕	∕
Aromatic hydrocarbons	∕	∕
Aliphatic hydrocarbons (more than C <sub>3</sub> )		Double-layer stain is produced. If the dark brown stain is clear, the readings can be obtained by it.
Halogenated hydrocarbons		∕



No. 111U Tube reading (ppm)